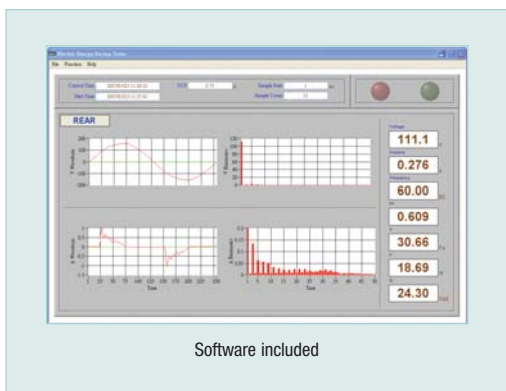


# Universal AC Power Source + AC Power Analyzer

**Front (100W) and Rear (2000W) Universal Output Sockets**  
For testing products from 85 to 250VAC, 45 to 65Hz

## Features:

- Standby Power Measurement (10mW to 100W) for desktop and notebook PCs, LCD TVs, AC adaptor/chargers, and any other products that continue to use power when connected to AC, even though they are not in use
- Standard Power Measurement  
100mW to 1000W (110V)  
100mW to 2000W (220V)
- Power Quality Measurement (Watts, Power Factor, Voltage, Current, Harmonics)
- Cost Function calculates cost per day, month, and year
- 99 memory locations for preset voltage and frequency output settings
- Standby and Operation button
- User-programmable Over Current Protection (current limiting)
- Programmable through the built-in RS-232 interface
- Data acquisition mode captures readings to your PC with a user-programmable sampling rate of 2 to 65,535 seconds
- Complete with AC power cord, RS-232 to USB cable and software



Specifications	Range	Resolution	Accuracy
<b>Front Panel</b>			
Output Voltage	85 to 250V	0.1V	±1%
Output Frequency	45 to 65Hz	0.01Hz	±0.1Hz
Power	10mW to 100W	0.1mW	±(1% + 0.05W)
AC Current	5mA to 1.5A	0.1mA	±1%
Power Factor	0 to 1	0.001	±0.04
<b>Rear Panel</b>			
Output Voltage	85 to 250V	0.1V	±1%
Output Frequency	45 to 65Hz	0.01Hz	±0.1Hz
Power	100mW to 2000W	0.1mW	±(1% + 0.5W)
AC Current	5mA to 10A	0.1mA	±1%
Power Factor	0 to 1	0.001	±0.04
Harmonics (in amps)	1 to 50th order	0.1mA	±1.4% (1-10th)
THD	0.0 to 999.9%	0.1%	±3%
Input Power Source	110 or 220V; 45 to 65Hz		
Dimension	12 x 10.2 x 5.9" (305 x 260 x 151mm)		
Weight	21.8lbs (9.9kg)		

## Ordering Information:

380820 .....Universal Power Supply + Power Analyzer

